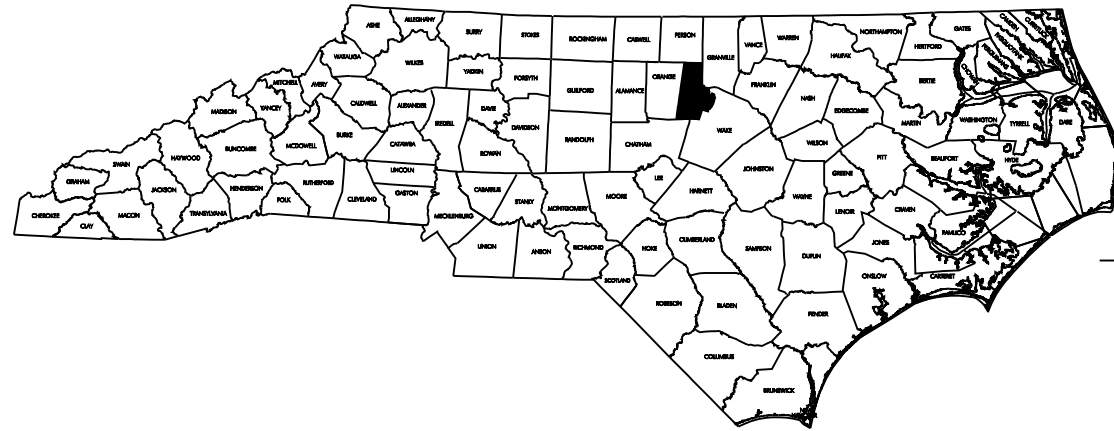


CONTRACT NO. D000031 TIP PROJECT: B-4700AD

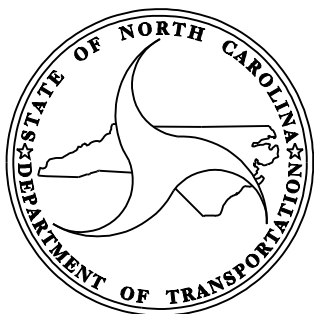
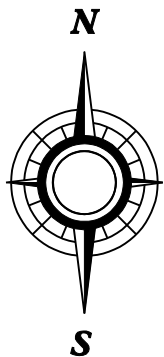
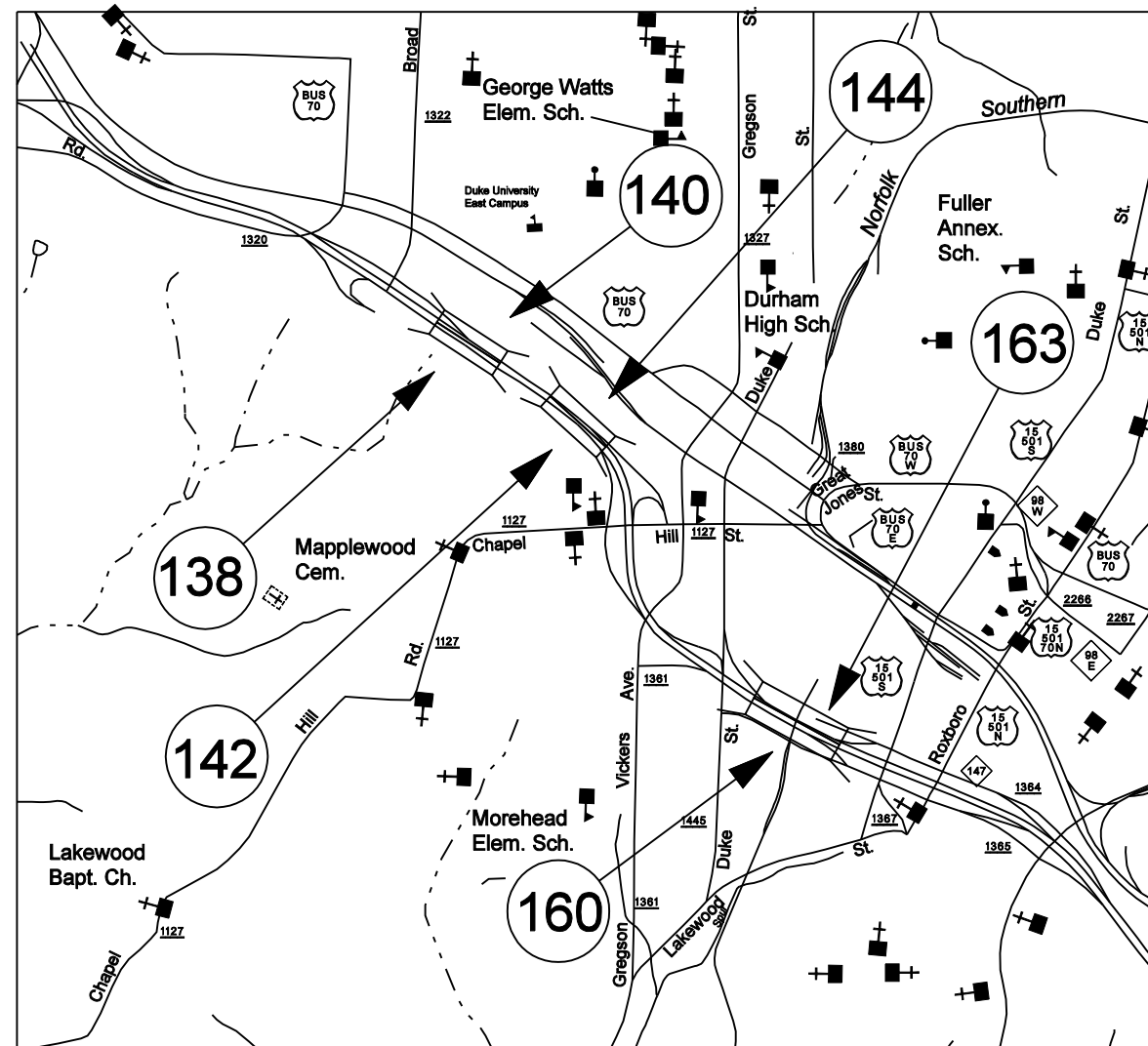


STATE OF NORTH CAROLINA
DIVISION OF HIGHWAYS

DURHAM COUNTY

STATE	STATE PROJECT REFERENCE NO.	SHEET NO.	TOTAL SHEETS
N.C.	B-4700AD	1	1
STATE PROJ. NO.	F.A. PROJ. NO.	DESCRIPTION	
36727.1.1	BRNHS-000S(504)	P.E.	
36727.3.29	BRNHS-000S(370)	CONST	

LOCATION: NC 147
TYPE OF WORK: BRIDGE PRESERVATION: CLEANING AND PAINTING OF BRIDGES #138, #140, #142, #144, #160 & #163
IN DURHAM COUNTY.



DESIGN DATA

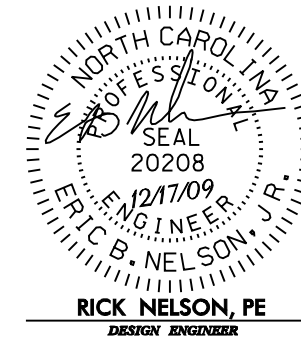
PROJECT LENGTH

Prepared In the Office of:
BRIDGE MANAGEMENT UNIT
NORTH CAROLINA DEPARTMENT OF TRANSPORTATION
2006 STANDARD SPECIFICATIONS

LETTING DATE:
MARCH 18, 2010

DAN HOLDERMAN, PE
STATE BRIDGE
MANAGEMENT ENGINEER

MIKE SUMMERS
BRIDGE MANAGEMENT
PROJECT MANAGER



RICK NELSON, PE
DESIGN ENGINEER

STATE OF NORTH CAROLINA
DIVISION OF HIGHWAYS

**PLAN FOR PROPOSED
TRAFFIC CONTROL**

DURHAM COUNTY

LOCATION: BRIDGE NO.S 138, 140, 142, 144, 160, AND 163.

TYPE OF WORK: TRAFFIC CONTROL FOR BRIDGE PAINTING

LEGEND

GENERAL

- DIRECTION OF TRAFFIC FLOW
- NORTH ARROW
- WORK AREA

TRAFFIC CONTROL DEVICES

- TYPE III BARRICADE
- CONE
- DRUM SKINNY DRUM
- FLASHING ARROW PANEL (TYPE C)
- STATIONARY SIGN
- PORTABLE SIGN
- STATIONARY OR PORTABLE SIGN
- PORTABLE CONCRETE BARRIER
- TEMPORARY CRASH CUSHION
- CHANGEABLE MESSAGE SIGN
- TRUCK MOUNTED IMPACT ATTENUATOR (TMIA)
- POLICE
- FLAGGER

ROADWAY STANDARD DRAWINGS

THE FOLLOWING ROADWAY STANDARDS AS APPEAR IN "ROADWAY STANDARD DRAWINGS" - PROJECT SERVICES UNIT - N.C. DEPARTMENT OF TRANSPORTATION - RALEIGH, N.C., DATED JULY 2006 ARE APPLICABLE TO THIS PROJECT AND BY REFERENCE HEREBY ARE CONSIDERED A PART OF THESE PLANS:

STD. NO.	TITLE
1101.02	TEMPORARY LANE CLOSURES
1101.04	TEMPORARY SHOULDER CLOSURES
1101.11	TRAFFIC CONTROL DESIGN TABLES
1110.02	PORTABLE WORK ZONE SIGNS
1115.01	FLASHING ARROW PANELS
1130.01	DRUMS
1135.01	CONES
1145.01	BARRICADES
1150.01	FLAGGING DEVICES
1165.01	TRUCK MOUNTED IMPACT ATTENUATOR
1180.01	SKINNY DRUMS

INDEX OF SHEETS

SHEET NO.	TITLE
TCP-1	LIST OF APPLICABLE ROADWAY STANDARD DRAWINGS, LEGEND, AND INDEX OF SHEETS
TCP-2	GENERAL NOTES
TCP-3	VICINITY MAP AND PROJECT PHASING
TCP-4	LANE CLOSURES DURING PAINTING OVER BLACKWELL ST. SOUTHBOUND
TCP-5	LANE CLOSURES DURING PAINTING OVER BLACKWELL ST. NORTHBOUND

WBS 36727.3.29

TIP PROJECT: B-4700AD

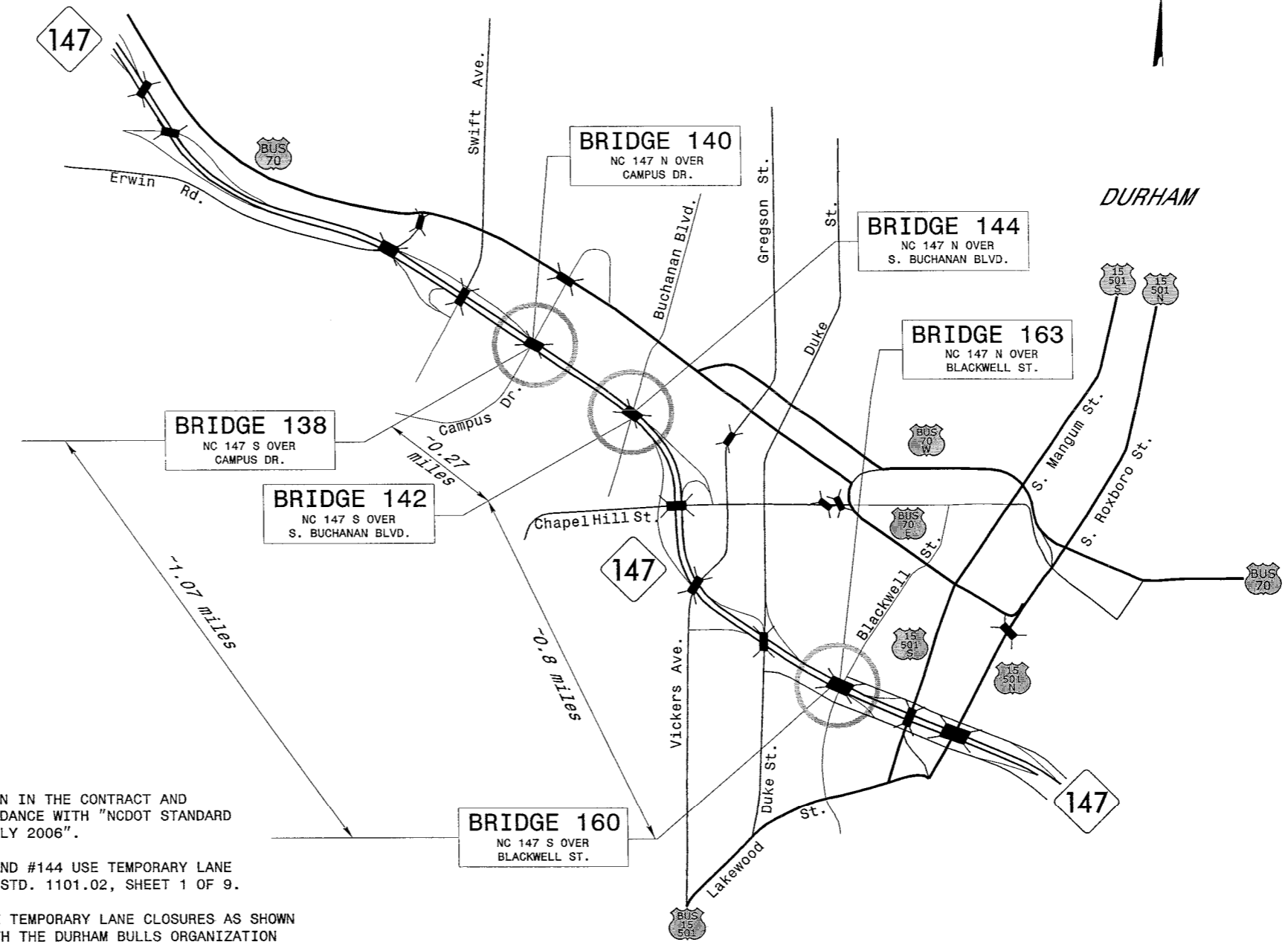
2/16/2010 d:\traffic\trafficcontrol\b-4700ad\durham\tcp\plan sheets\b-4700ad_tcp_psh_01.dgn gkan@george

APPROVED: DATE: 2/16/10 PLAN PREPARED BY:

STANTEC
Stantec Consulting Services Inc.
Suite 300, 801 Jones Franklin Road
Raleigh, NC 27606
Tel. 919.851.6866
Fax. 919.851.7024
www.stantec.com

BETSY L. WATSON, PE TRAFFIC CONTROL ENGINEER
GEORGE KARAGEORGE TRAFFIC CONTROL DESIGNER

DURHAM COUNTY



TRAFFIC CONTROL PHASING

STEP 1:

PERFORM BRIDGE PAINTING OPERATIONS AS SHOWN IN THE CONTRACT AND CONSTRUCTION PLANS. PERFORM WORK IN ACCORDANCE WITH "NCDOT STANDARD SPECIFICATIONS FOR ROADS AND STRUCTURES-JULY 2006".

WHEN WORKING ON BRIDGES #138, #140, #142 AND #144 USE TEMPORARY LANE CLOSURES TO PERFORM THE WORK ACCORDING TO STD. 1101.02, SHEET 1 OF 9.

WHEN WORKING ON BRIDGES #160 AND #163, USE TEMPORARY LANE CLOSURES AS SHOWN ON SHEETS TCP-4 AND TCP-5. COORDINATE WITH THE DURHAM BULLS ORGANIZATION DURING PAINTING OPERATIONS OVER THE PARKING LOT ADJACENT TO BLACKWELL ST.

AT THE END OF EACH DAY'S OPERATIONS MOVE EQUIPMENT TO STAGING AREA AT LEAST 40 FEET AWAY FROM ANY TRAVEL LANES AS APPROVED BY THE ENGINEER AND REMOVE LANE CLOSURES. WHEN NOT BEING USED TO CLOSE A LANE, DRUMS MAY EITHER BE TOTALLY REMOVED OR BE MOVED TO OUTSIDE OF SHOULDER SUCH THAT THEY DO NOT CLOSE THE SHOULDER.

STEP 2:

UPON COMPLETION OF THE PROJECT, REMOVE ALL TRAFFIC CONTROL DEVICES.

2/16/2010 J:\Traffic\TrafficControl\B-4700AD\Durham\Tcp\plan sheets\B-4700AD.tcp.psh.03.dgn gkorleorge

Stantec
 Stantec Consulting Services Inc.
 Suite 300, 801 Jones Franklin Road
 Raleigh, NC
 27606
 Tel. 919.851.6866
 Fax. 919.851.7024
 www.stantec.com

SEAL

Gregory L. Watson
 2/16/10

SIGNATURE DATE

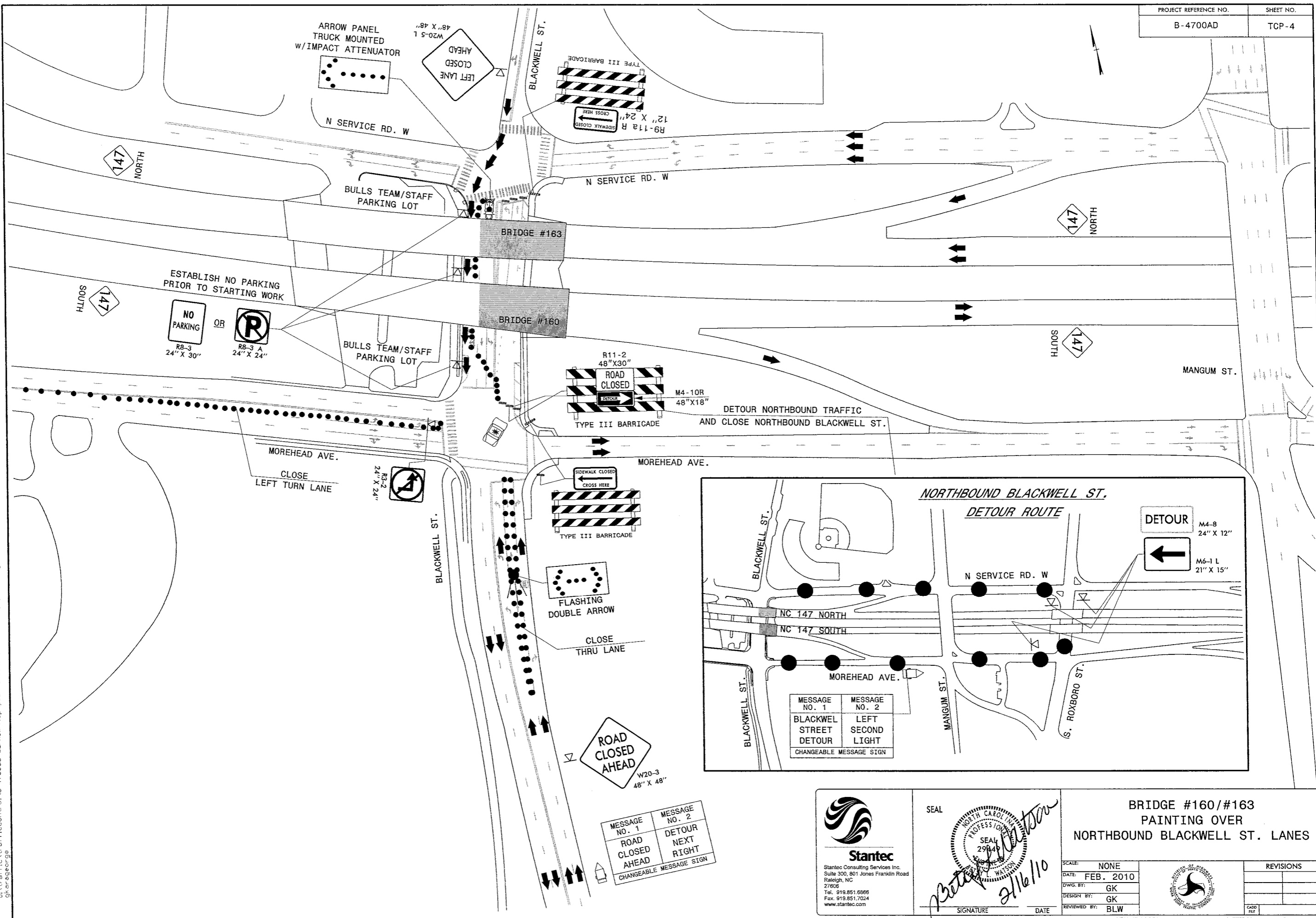
**DURHAM COUNTY BRIDGE PAINTING
 VICINITY MAP
 TRAFFIC CONTROL PHASING**

SCALE:	NONE
DATE:	FEB. 2010
DWG. BY:	GK
DESIGN BY:	GK
REVIEWED BY:	BLW



REVISIONS	

2/16/2010
 u:\traffic\trafficcontrol\B-4700ad_durham\tcp\plan_sheets\B-4700AD_tcp_psh_04.dgn
 glenrgeorge



Stantec
 Stantec Consulting Services Inc.
 Suite 300, 801 Jones Franklin Road
 Raleigh, NC
 27608
 Tel. 919.851.6666
 Fax. 919.851.7024
 www.stantec.com

SEAL

 SIGNATURE: Peter Watson
 DATE: 2/16/10

BRIDGE #160/#163
PAINTING OVER
NORTHBOUND BLACKWELL ST. LANES
 SCALE: NONE
 DATE: FEB. 2010
 DWG. BY: GK
 DESIGN BY: GK
 REVIEWED BY: BLW
 REVISIONS
 CAD FILE

